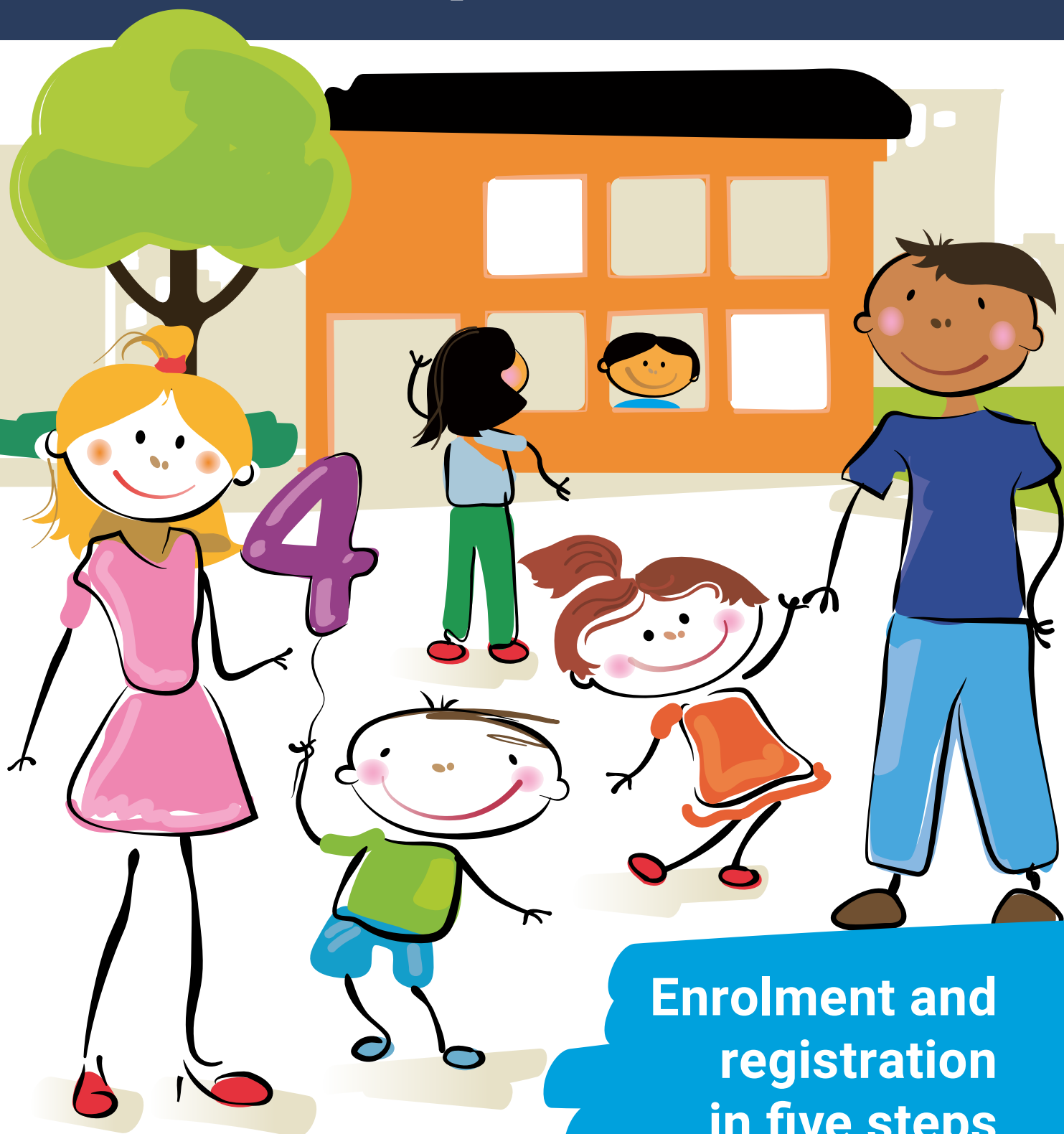


# Starting Primary School in Apeldoorn



**Enrolment and  
registration  
in five steps**

# START



When children reach the age of four, they are eligible for primary education. At the primary schools of **Leerplein055, PCBO Apeldoorn and Veluwe Onderwijsgroep** there are shared rules for the enrolment and registration of children.

In this brochure, you'll find information about the application process for the primary schools in Apeldoorn.

*PParents of children born between the 1st of September 2021 and the 31st of August 2022 are invited to register their children.*

## 1 Choosing

All the primary schools in Apeldoorn are listed on the website [www.basisscholenapeldoorn.nl](http://www.basisscholenapeldoorn.nl). There are different types of primary schools; public (openbare) and independently-run (bijzondere) primary schools. Both of these systems can have different educational approaches. We advise you to visit several schools before enrolling your child. You can then decide which schools suit your child best. You can visit the open days of schools the 13th of November 2024 and the 2nd of April 2025. You can also contact the schools directly and ask for an appointment.



### Non-participating primary schools

The rules of the central placement system do not apply to seven specific schools in Apeldoorn as these do not belong to the schoolboards mentioned above. These schools are IKC Hei en Bos, Rehobothschool, 't Schrijvertje, Vrije School De Vijfster, basisschool Eben-Haëzer, Prins Willem Alexanderschool and IBS De Roos. If you want to apply to one of these primary schools, you'll need to contact these schools directly.

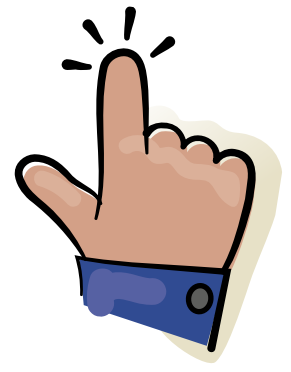
### Priority at a school

*Your child has priority status on the six primary schools that are nearest to the child's home address. These six priority schools (voorrangsscholen) are determined by the cycling distance between the primary schools and the home address.*

*Children who live in one of the villages, belonging to the municipality of Apeldoorn have extra priority at the priority schools in these specific villages. Children living in the city of Apeldoorn also have priority at the schools in these specific villages. They will be allocated a place after the children living in the villages.*

*By entering your child's home address and date of birth on [www.basisscholenapeldoorn.nl](http://www.basisscholenapeldoorn.nl) you can find the primary schools in your vicinity and thus the schools your child has priority status on.*

## 2 Enrolment



You can enrol your child at any primary school in Apeldoorn, priority schools as well as non-priority schools. You are free to choose a school outside Apeldoorn. Children living outside Apeldoorn (municipality) can also enrol at a school in Apeldoorn.

### There are two ways to enrol for a primary school:

1. Visit the website [www.basisscholenapeldoorn.nl](http://www.basisscholenapeldoorn.nl) for the *digital application form*; don't forget to register the adrescode.  
OR
2. Fill in the hardcopy application form and submit it at the school of your first choice.
  - ✓ Please check the pre-printed data on the form, such as your child's date of birth, name and address. If the data contain errors, please correct them on the enrolment form.
  - ✓ Fill in at least four schools; put your first choice at number 1; put your second choice at number 2 and so on. These may be priority schools, but they do not have to be.
  - ✓ Fill out the enrolment form completely and don't forget to sign it.
  - ✓ Submit the form at the school of your first choice before the deadline. The deadline depends on the date of birth of your child.

Date of birth	Deadline for delivery
1 September 2021 to 31 December 2021	October 2024 to 16 January 2025
1 January 2022 to 30 April 2022	October 2024 to 8 May 2025
1 May 2022 to 31 August 2022	October 2024 to 11 September 2025

The school will register every enrolment in the registration system of the schoolboards. Within 10 days after submitting the enrolment form, you will receive an e-mail containing your proof of enrolment. Please check the details on this proof of enrolment. If it contains any error or you want to change the order of your preferred schools, contact the school before the deadline.

### I don't have an application form

Register your child at [www.basisscholenapeldoorn.nl](http://www.basisscholenapeldoorn.nl) or download a hard copy from the website and submit it at the school of your first choice. You can also ask one of the schools or the helpdesk to send you a form.

### Always enrol!

Children who already have an older sister or brother registered at the school of preference, still need to be enrolled by submitting an enrolment form to this school.

Even if you have a *written confirmation* for a place at a specific school, it is still necessary to apply/confirm this place. Deliver the form and a copy of the written confirmation to the school of your first choice. The deadline can be found below. After the deadline written confirmations are no longer valid. No written confirmations were given to children born after 2021.

Date of birth	Closing date written confirmations
1 September 2021 to 31 December 2021	November to 12 December 2024

## 3 Placement



After the deadline has expired, all enrolled children will be placed during the official placement.

If the school has enough places for all enrolled children, they will all be granted a place. If there are more enrolments than there are places, children with priority status will be placed first and then all non-priority enrolments will follow. When your child cannot be placed at the school of first preference, he/she will be placed at the second school of preference. If this school is also full, your child will be placed at the third school of preference, et cetera.

In case your child cannot be placed at any of the preferred schools submitted by you, he/she will be placed at one of the remaining priority schools. These have not been submitted by you but are added to your proof of enrolment.

The result of the placement will be that every child is placed at the school of the highest possible preference. The majority of schools in Apeldoorn have sufficient places.



### The order of allocation of enrolled children

#### The placement at the school of 1<sup>st</sup> choice takes place as follows:

1. An older sister/brother is registered at the school when the child reaches the age of four; a place is guaranteed.
2. The child has attended, at least from the second birthday for the minimum of two half-days a week, the day-care that belongs to the school and has the school as a priority school.
3. The child has priority status at the school.
4. The child does not have priority status at the school but lives in the municipality of Apeldoorn.

#### The placement for all the children that did not get a place at their 1<sup>st</sup> choice:

5. The child has priority status at their 2<sup>nd</sup> to 8<sup>th</sup> choices.
6. The child has no priority at the schools of their 2<sup>nd</sup> to 8<sup>th</sup> choices and lives in Apeldoorn.
7. The child does not live in Apeldoorn.

## 4 Registration

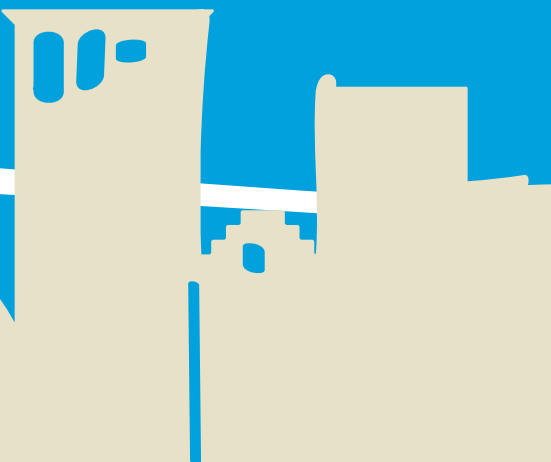
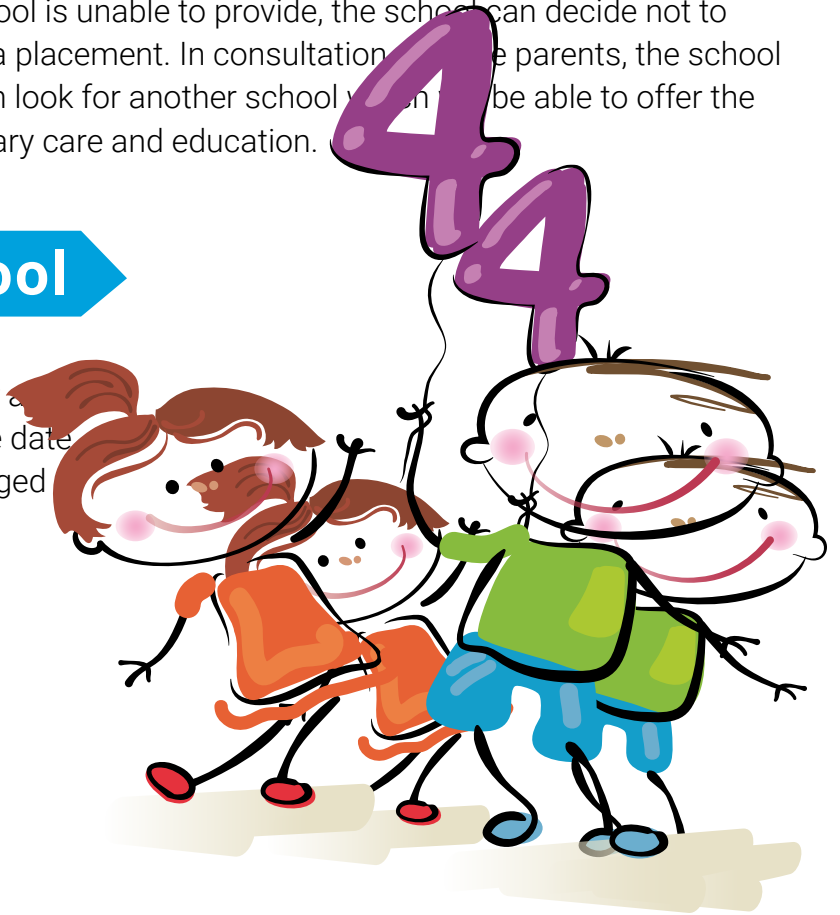


After the placement, you will receive a letter from the school where your child has been placed. This letter will contain the registration deadline before which you must notify the school that you want to use the allocated place for your child. Please make sure your child is registered in time! Placement is only certain when registration has been completed. During the introductory meeting with the school, tell as much as possible about your child. This allows the school to make a good estimate of your child's needs.

In exceptional cases, when a child requires special care which the school is unable to provide, the school can decide not to permit a placement. In consultation with the parents, the school will then look for another school which may be able to offer the necessary care and education.

## 5 Starting school

Your child has reached the age of four and will start first grade in primary school. The date for the first day at school will be arranged together with the school.



# Starting Primary School in Apeldoorn

## More information

### **[www.basisscholenapeldoorn.nl](http://www.basisscholenapeldoorn.nl)**

On this website, you can find information about the primary schools in Apeldoorn. After filling in your child's home address and date of birth, you can find the schools with priority status and the list of all the schools in Apeldoorn.

This website contains links to the websites of the specific schools and boards.

Parents who did not receive an application form can download one from this website.

### **Helpdesk Toelatingsbeleid (placement policy)**

If you need help or have questions, you can contact the helpdesk:

By email: [helpdesk@basisscholenapeldoorn.nl](mailto:helpdesk@basisscholenapeldoorn.nl)

By phone: 055 206 2299

### **Schools and boards**

You can reach any school or school board for questions. The websites of the schools contain additional information.

